



# PARISH PROFILE

---

DUDLEY TEAM CHURCHES  
May 2026

# CONTENTS

- AN INVITATION FROM OUR BISHOPS [3]
- LETTER FROM OUR ARCHDEACON [4]
- TOP CHURCH [5-9]
- ST FRANCIS [10]
- ST JOHN'S [11]
- ST AUGUSTINE'S [12]
- BENEFICE STATISTICS [13]
- WHO'S WHO [14 -15]
- THE ROLE [16]
- YOU? [P17]
- THE RECTORY [18]
- ABOUT DUDLEY [19 - 20]
- THE DUDLEY DEANERY [21]
- DIOCESE OF WORCESTER [22]
- HOW TO APPLY [23]
- GALLERY [24 -25]



# INVITATION

For more than a thousand years, Christians across Worcestershire and Greater Dudley have prayed and worshipped, opened the Scriptures and received the Sacraments, served their communities and proclaimed the gospel. We have done this through plague, civil and world war, industrial revolution and dramatic social change. And today this deep and faith-filled history inspires us to ask – what does God need of us now and what might he be calling us to next?

And the words Kingdom People sum up our response to that call today.

To be Kingdom People is to know that God is close at hand, and that we are invited to join him in nurturing the love, compassion, justice and freedom that marks His rule and reign.

To be Kingdom People is to belong to parish churches, schools and worshipping communities that want to live 'kingdom lives', learning from Jesus and one another how to live with faith, hope and love.

To be Kingdom People is to be deeply curious about where the Holy Spirit is working, within and far beyond the church, pointing people towards God's holy and life-changing presence.

We want to be Kingdom People in the real world that we belong to, in all its beauty and all its mess. Rather than longing for a golden past or imagining a perfect future, we choose to meet reality with confidence, humility and hope, as communities of real people serving this real world.

We are therefore looking for priests who share that vision; who want, first of all, to be disciples of Jesus and who are building their lives on the solid foundation of his love and grace; who can build faithful and curious communities, working in partnership with people of every kind and background; who are committed to serving people and communities with humility and resilience.

And in all of that, because it is our priority of priorities, we need priests who will engage boldly and creatively with children and young people, their families and schools. What we are not looking for is priests who are perfect, or who expect to do everything, thinking that it's all on them.

Our commitment to all our clergy and lay leaders is that we will help equip them effectively for the mission to which they've been called. Nor are we looking for priests who fit any particular mould – God has given diverse gifts to every kind of person, and we want to celebrate that diversity.

We know that priestly ministry brings great blessings but is also demanding and sometimes costly. We expect to be available when you need us and to support you practically and with prayer, investing in your ongoing development as a disciple and priest.

This comes in the hope that your discerning is rich and holy and that, if the Holy Spirit is stirring you to consider this role, you will do so.



+ Mouton + Hughes



**Kingdom People**  
love • compassion • justice • freedom

# FROM THE ARCHDEACON OF DUDLEY

## LETTER FROM THE ARCHDEACON OF DUDLEY

I am delighted you are considering a potential call to this key post in one of our flagship resourcing churches. Top Church has been a pioneering partner in our journey of transformation and change, and has a national reputation for growing as a vibrant, missional and inclusive community in a deprived urban area. James Treasure, who formed a team to lead the first stage of the Top Church journey, has been appointed as Bishop of St Germans, so we now seek his successor.

It's a really exciting role, at a key juncture, and I am filled with hope at what lies ahead.

As a diocese we are committed to seeking ongoing funding support for the vital work in Dudley – ongoing sustainability is complex in a setting such as this, so ministry here will be part of the next phase of our transformation programme.

We want the new leader to be involved in discerning the vision, so whilst there are some emerging hopes and dreams about the team playing an important part in developing leaders in the north of the diocese, building on the contextual expertise gained over these past few years, and a desire to see community hubs grow in the other benefice churches, we are not being too prescriptive at this stage.

The right person for the role will be confident working in a changing environment, flexible as we hone the structures within the team and benefice for good governance going forward, and willing to work collaboratively both with the fabulous team of staff and volunteers in place, and diocesan colleagues developing bigger picture missional plans.

You will need vision, and faith, and a heart open to embracing the people of Dudley as they are drawn into life in all its fullness.

As you read the profile I am sure questions will arise – there is only so much you can squeeze into a document of this nature!

I am very willing to have a conversation to help your discernment, particularly about how the various aspects of the role fit together, functioning both as Team Rector and Resourcing Church Leader, so please do get in touch.

I will be praying for all who are exploring whether their future might be joining with ours on this ongoing adventure.

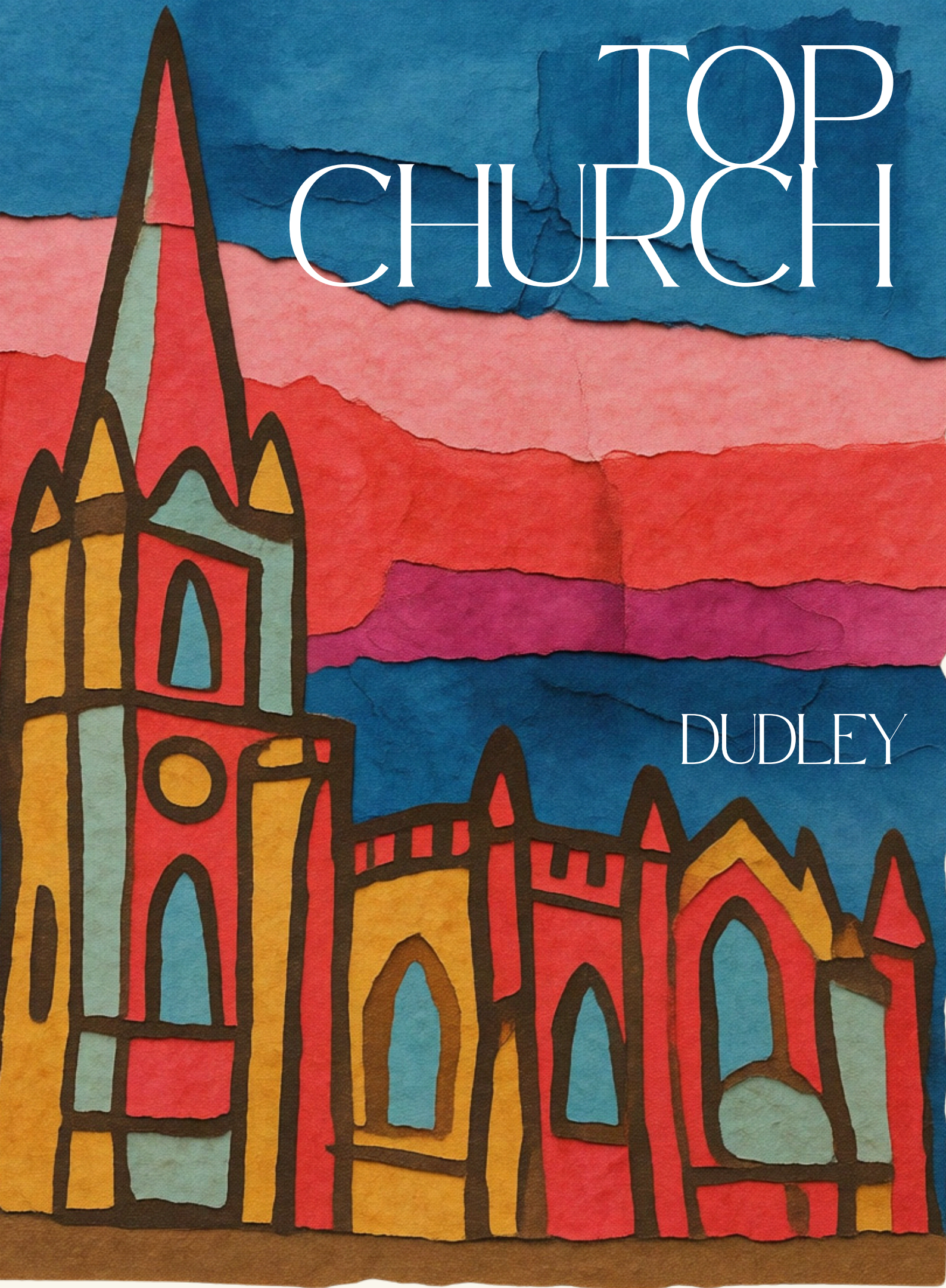


A handwritten signature in black ink, which appears to read 'Nikki Groarke'.

NIKKI GROARKE  
ARCHDEACON OF DUDLEY  
DIOCESAN LEADER FOR  
TRANSFORMATION AND CHANGE

# TOP CHURCH

DUDLEY



# OUR VISION

Is to be a thriving Anglican Church which is a blessing to its community and a resource to other churches.

# OUR MISSION

Is for the people in Dudley to experience life in all its fullness as Jesus promised.

# OUR VALUES

These guide the fulfilment of our vision and mission. Together they form an 'ecology' of the fullness of life, each in interplay with all the others, they are:

**Worship**

**HOPE**

**DIGNITY**

*Formation*

**Openness**

*Community*

**aspiration**

**A Voice**

# Who We Are

**We feel God is at work and doing something truly remarkable and beautiful in one of the most marginal places in the UK.**

**We are seeing the good news of Jesus transforming lives and revitalising the church here at Top Church in Dudley – it's an exciting place to be!**

Top Church is the name given affectionately by locals to the church of St Thomas and St Luke's. We are Open-Evangelical with a desire to welcome and include the many. We believe that Christ promises his presence in the Eucharist and so as a congregation we are committed to 'building a bigger table' where all can encounter the love and presence of Jesus. In our worship we are contemporary, creative, and invitational, whilst remaining rooted in the richness of Anglican liturgy and tradition.

We are a community of around 180 people, with a regular Sunday attendance of over 100. We share a life that is joyful and authentic, grounded in genuine community. Our worship is vibrant and hopeful, yet we remain honest about life's challenges. In Dudley we don't shy away from the difficult questions but instead wrestle with faith, doubt, and suffering together, discovering again and again that God is our refuge and strength.

We value inclusivity. Being open to God leads us to openness with others. We are committed to being a church that reflects the richness and diversity of both God's Kingdom and the wider community we serve here in Dudley.

We seek to be a Kingdom-shaped community where people from all walks of life are welcomed, valued, and find belonging. This openness includes a wholehearted commitment to ensuring our LGBTQ+ community is fully welcomed and able to flourish within our church family, and a commitment to welcoming those on the margins of society, including refugees and asylum seekers.

Participation matters to us, and our many volunteers all play an important role in not only making ministry happen but shaping all that we do.

This same ethos shapes our mission. Dudley is a place of missional opportunity and untapped potential for the Kingdom of God. At the heart of the town, this parish offers a remarkable platform for visible, transformative ministry—not only within the church, but across the whole civic life of Dudley.

There are rich opportunities to build relationships with local communities. We play a key role in Dudley's African Caribbean community through funeral ministry, developing relationships particularly with the Windrush generation and their children – the relationship with Top Church holds a special place in their hearts. Additionally, there are many opportunities to partner with local leaders, the council and community organisations, and contribute to the life and future of the town as a confident Christian voice.



who lives in our hearts through faith,

# What We Do

**God is at work! From being open just a few hours a weekend, Top Church is now bustling with activity. Throughout the year we run a number of events including Summer and Christmas Fayres, Heritage Open Days, and activities for Children, Youth and Families**

Our weekly pattern draws people of all ages from all walks of life, united by a desire to belong, to grow, and to encounter Jesus. We want our church to be a place where community is built, needs are met, and lives are transformed. Whether we're opening our doors for young families, creating fresh ways for people to meet Jesus, or offering food, warmth and welcome, every gathering is a valuable part of the life of the Church.

Our Sunday services are first built around hospitality, host leadership, and relationship. We worship together, offer engaging and formative preaching, and an open table inviting encounter.



Throughout the week, we open our doors as a place of peace, curiosity and encounter. People step inside to explore, to ask questions, to pray, or seek solitude.



is a hospitable space where local people with a variety of support needs can find connection, conversation and care. This is an area with potential for growth, creativity and partnership.



Our free parent-toddler group for families with children up to primary age, led by our Community and Heritage Director. It's a joyful, bustling space filled with toys, crafts, food and song. For many local families, it's their first step into the life of church and a place where trust and friendship naturally grow.



is a relaxed, welcoming space led by our Youth and Children's Minister. Our young people are encouraged to ask questions, explore faith, build friendships, and discover what following Jesus looks like amid the challenges of today.



Our small but committed choir contributes to worship and civic life. Led by our Worship Director, they serve both the church and the wider community with contemporary worship songs for both reflection and celebration.



Our midweek communion is short, friendly and welcomes our wider community. It's a space where faith is nurtured in simplicity, often with a few assembly classics thrown in for good measure.

## 11am

is a more contemplative communion service with contemporary worship and activities for younger children.

## 4pm

is the beating heart of our gatherings together. This more lively service invites everyone to come and join in the welcome, the encounter and the outworking of Christ. With activities for children and youth, we are not just multigenerational but increasingly intergenerational, involving our younger generations in the service and encouraging the community to know and support them.

**Beyond our walls, our community links span the ages and enrich the lives of those around us. We deeply value our partnerships and community connections. We support two wonderful Church of England Primary Schools, and have welcomed visits from others including the nearby Special School. We regularly bring worship and communion to local care homes, we have strong relationships with local charities such as CHADD (a local housing association), and with our local MP who uses Top Church for her surgeries.**

**On a weekly basis Alcoholics Anonymous meet at Top Church, and three times a week our vestry is transformed into a Kumon Centre. We assume a visible role at Dudley's annual Pride events and we have an important role in Dudley's civic life, leading in a number of significant events at Remembrance and Christmas.**

## Our Journey

**In the early days of planting Top Church, a word that kept coming up again and again was *adventure*.**

As a Resourcing Church planted in 2018, we are, in many ways, still very young. Yet historically, God's church has been worshipping on this site for over 800 years. Many faithful congregations before us have served Dudley and its people. We hold our rich history alongside a fresh excitement for what God has been doing and is yet to do! We are proud to be a part of the story of Top Church, continuing God's ministry for the benefit of generations to come.

Our chapter of Top Church's story began almost 8 years ago. With Strategic Development Funding we were able to build a skilled team of staff and clergy who led the way in making our dreams for Top Church a reality. We have seen people come to know the love of Jesus in life changing ways, including having supported five members of our congregation as they have responded to God's call into ordained ministry. We are beginning to feel the impact of being a healthy and vibrant community in the heart of Dudley and we feel privileged to be an important part of the growth and formation of many children in our local area.

Our building has seen transformation too, with pews removed and many areas in the church modernised and improved, all built to serve the new purposes of Top Church. The building itself was on Historic England's At Risk Register but our most significant building works are completed and it has since been removed. It is a joy to now use the space in versatile ways to serve the congregation and community.

We just hope and pray that God will send someone to help keep us moving forwards



The life of our church today is a blessing from God and a reflection of the prayer, commitment, and hope of our community. We feel like the adventure is still going strong! We're so excited to see what God has in store and as we think about the future, it feels like there are several possible directions in which He might lead us.

What we do know is that we want to keep growing both spiritually and numerically, helping as many people as possible encounter the love of God in Jesus and find their place among us. We also feel a real call to be a blessing to our wider community in new and exciting ways.

What we're less sure about is exactly how this will take shape. Many possible futures have been imagined for Top Church and we will need to seek God's vision for the future. The scope is wide. There is potential for a further bid for National Church of England (SMMIB) funding, helping us grow and develop as a Resourcing Church, supporting and training others in contextual urban mission and ministry. Or we might further develop our wider vision across the town, supporting the benefice churches to develop community hubs, or even seek to serve across the whole borough. All of course while continuing to serve faithfully as a parish church, responding to the needs of those around us.

**However God leads, we'd love someone who's up for the adventure - someone who can help us notice what God is doing and invite others to join in the Dudley adventure too.**



# St Francis, Wren's Nest & Priory

**St Francis Church is regarded by locals as the parish church for the Priory Estate, Wren's Nest Estate and the area known locally as St James.**

Our worshipping life is the heartbeat of our church, we come together to learn, share communion and help and pray for the needs of those around us. Our faith keeps us steadfast in the need to serve and through our services we help each other, respond to the needs of our community (which experience has shown us change rapidly), and share life together.

The Priory Estate and Wren's Nest Estate were created in the early 1930s, following a large-scale clearance of very poor-quality housing in central Dudley. St Francis was built to serve those very tightly knit communities, discerning how to share God's love and build relationship in the heart of Dudley. The estates, their people, and the church have grown up together, helping and supporting each other along the way.



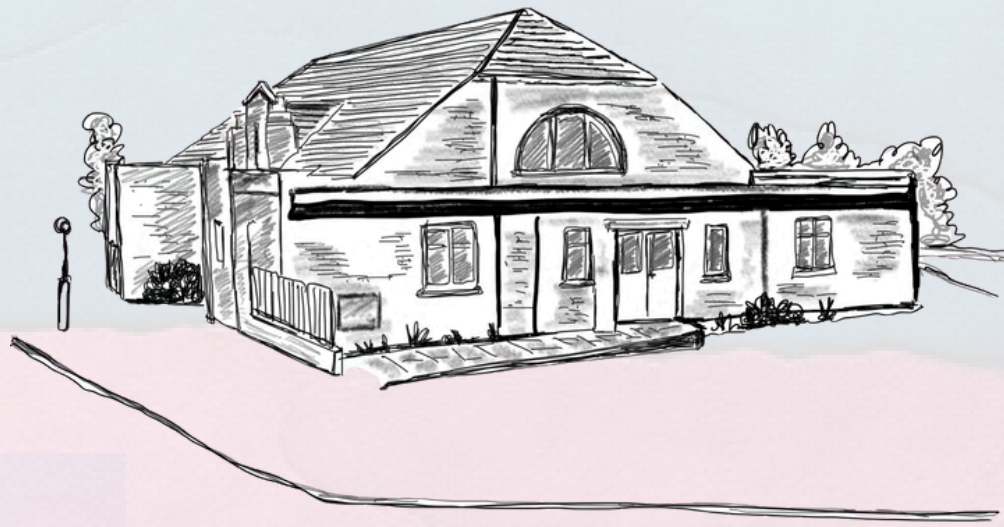
We love to encourage children and their families to engage with the church through our Messy Church and Mainly Music. We have long had a good relationship with our growing Rainbows and Brownies and we want to create more opportunities for children and young people on the estates. We also work to strengthen ties with local schools, host community events and expand our community services with free meals being provided by Food Cycle one day each week. Our Coffee and Chat morning sees church volunteers serve up bacon butties, toast, cakes, and a hot drink at very discounted prices. Many attend and some are seeking out church events.

The area has been identified as an urban priority with high unemployment and child deprivation, along with all the social issues that brings. St Francis has experienced a decline in attendance over the last decade with attendance on a Sunday averaging around 18-23 and Wednesday 12-14. We envision a future where St Francis serves as a fully functioning Community Hub, not only for the Priory and Wren's Nest estates but also for the greater Dudley Parish. We would love to see our building being used as an asset for the community, and we would love to see God growing his church.

To get there we have challenges to overcome. Our building functions in three parts; Church, Loxton Hall and Parish Centre which are all excellent spaces and have huge potential. Yet serious building issues leave us with only the Parish Hall currently open for use and we are in the process of seeking funding to see the other spaces restored. The amount of support we are still able to give to the community highlights our dedication to creating a vibrant community hub for a diverse area.



We are hopeful for the future and believe there is much more to come for the church, the people and the estates. We have quite the journey ahead of us but we put our trust in God to lead us into that future.



# St John's, Kate's Hill

**The Church of St. John's is a small but deeply committed, resilient, and warm worshipping community.**

Our regular Sunday morning worship is central to our fellowship. We value our Sunday morning services immensely, learning from the Bible, sharing communion, and praying for the needs of those around us. Worship is Common Worship, currently with bi-weekly Holy Communion and bi-weekly Morning Worship. Our singing is usually accompanied by a CD. Our church life happens in the Parish Hall, as unfortunately in 2002 the original Victorian building opposite the hall was deemed unsafe for use, and this is a space we have used to welcome local people and local schools to our church.

It is important to recognise that Kate's Hill, the area around St John's, is multiracial, multicultural, and fragmented. It is a community in need of God's love. The building has potential for use for a variety of activities and could serve as an effective Community Centre. In 2024 steps were taken in this direction with significant help from Top Church who saw an opportunity to establish a Community Hub at St John's. Working together, we restored and transformed our Lower Hall into a wonderful, warm, and modern space, which became home to a new Food Bank. We also embarked on a project to modernise the main lobby area in the Upper Hall and made good progress with replacing the old toilets and improving the insulation and weatherproofing of the area. (The building is structurally sound, requiring attention to damp in certain places and the interior of the Upper Hall is in need of redecoration).

Sadly, we've also faced challenges. In the past two years our building has been a target for some minor acts of vandalism. Then, in November 2024, an arson attack led to the closure of the premises for over 12 months. We finally returned to the Lower Hall for worship at Easter!

We are a small congregation, committed to sustaining our worship and our care for one another, and caring for our building to ensure its continued use in the community. While our Food Bank currently remains closed, we make regular donations to the Black Country Food Bank and several ladies of the congregation make knitted items for local charities. The Mother's Union branch raises significant funds for the projects run by the MU - Diocese of Worcester. We are, however, aware that very few of us can offer much more than looking after the building we have been entrusted with and ensuring our weekly worship continues.

We recognise that as a small congregation we may not be in the position to do outreach activities necessary to rebuild the congregation to its former size but we do want to see the people in our community impacted by the love of God. We have faithful friends in Beechwood Primary School and Top Church, and we have a building with much potential that can be used for the good of the community, but we know it will take significant effort to identify and nurture future users and we are realistic about the challenges we face as a congregation.





# St Augustine's, Holly Hall

**St Augustine's is situated at the crossroads of Holly Hall, between Merry Hill and Russells Hall hospital, only a mile from Dudley town centre.**



It was constructed in 1884 with a clear mission to worship God and serve our local community. The layout of the building reflects this mission: a large, usable and open space with individual chairs, a café-style area, kitchen, meeting space, and a lady chapel for private prayer.

Over the years, we have focused on making our church a sustainable worshipping centre where local people can encounter the goodness of God. We have replaced service booklets with a screen, yet still experiencing a variety of liturgies, incorporating Iona and Celtic liturgy, and maintaining a central focus on the Eucharist. We are fortunate to have an ALM who is deeply rooted in our church and local community, serving on Sundays and officiating at funerals.

Members of the congregation take active roles in worship, reading the lessons and leading prayers, and a small LCC group work hard to ensure the church meets the community needs.

We have revitalised our ethos of serving the local community. Several from local homes for adults with learning disabilities regularly join us for Sunday Worship, and also use the church space during the week for their art group. Our average Sunday Service attendance is around 30 people.

We have re-established links with Woodside Primary School and we work closely with Sutton School, the nearby special school, who visit regularly for Experience Days. Bumble Bees nursery have begun to use our church for Christmas events and their Leavers Service where we welcome the children's families. We hope to see these partnerships continue to grow.

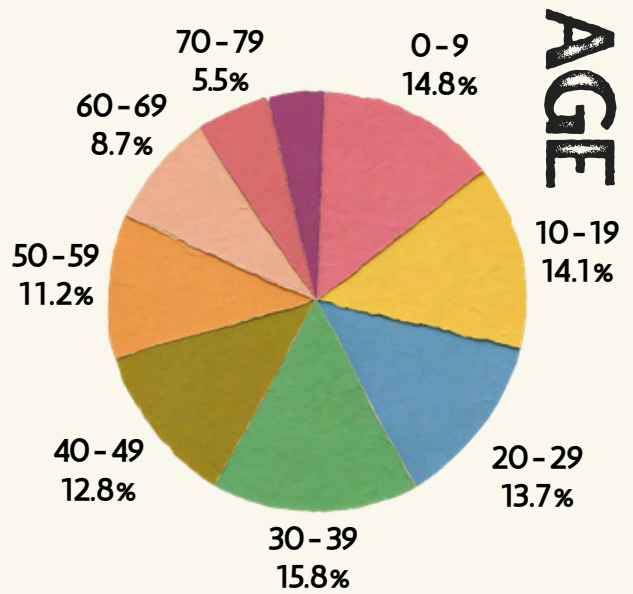
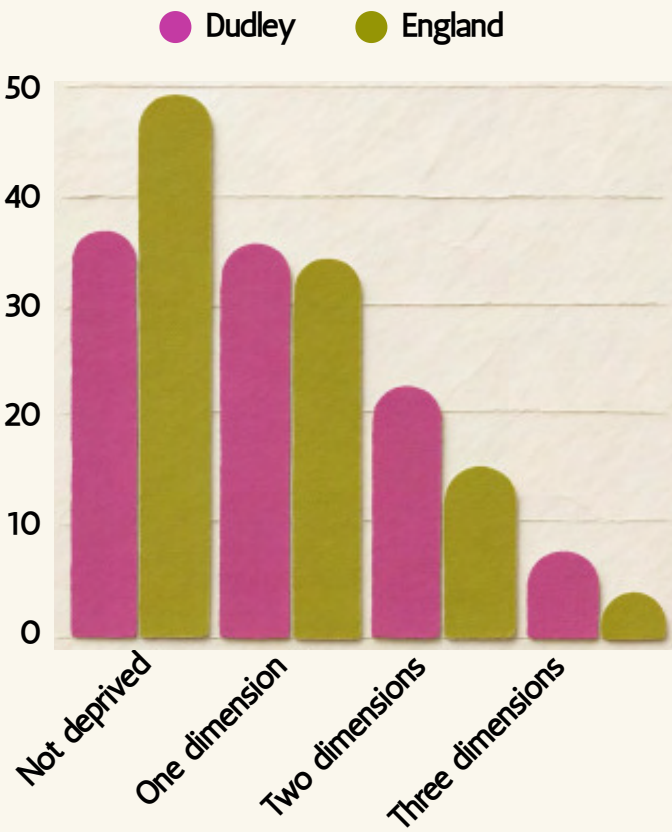
Throughout the week, we open our doors as a Place of Welcome, attracting a regular group. We also maintain good relationships with the neighbouring New Testament Church of God and the Methodist Church, where we run a weekly food bank together which has become a testament to God's kindness and leading. It has been a privilege to help many local needy families, and we are hoping and believing that God will be able to expand this work in ways we can't yet see.

Some of our plans for the future have included a plan to invest in new equipment and furnishings to create a more welcome space, and the establishment of a new Stay and Play, all supported by the Healthy Churches Fund. Changes in leadership meant that our plans have been put on hold, yet we are still dreaming for our future. Whether it's refurbishing the toilets or sharing Jesus with the whole community, we want to see God working in our midst so that many more can experience and attest to his goodness and love.

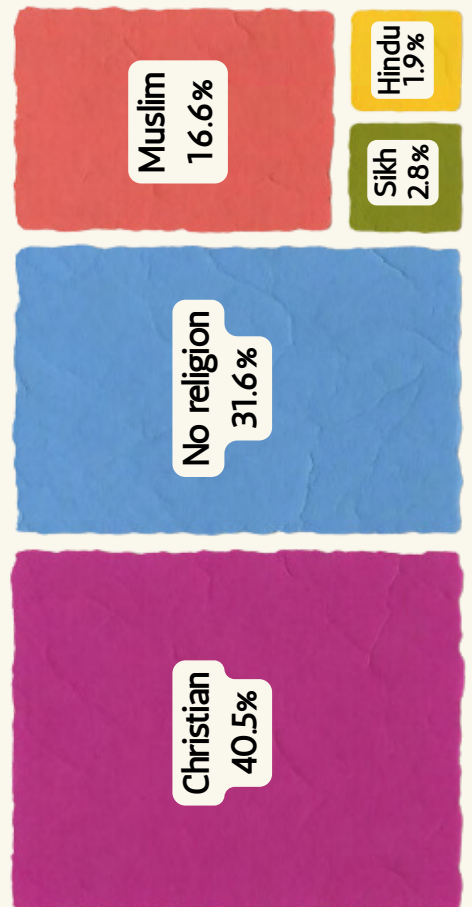


# THE DUDLEY BENEFACTICE in numbers

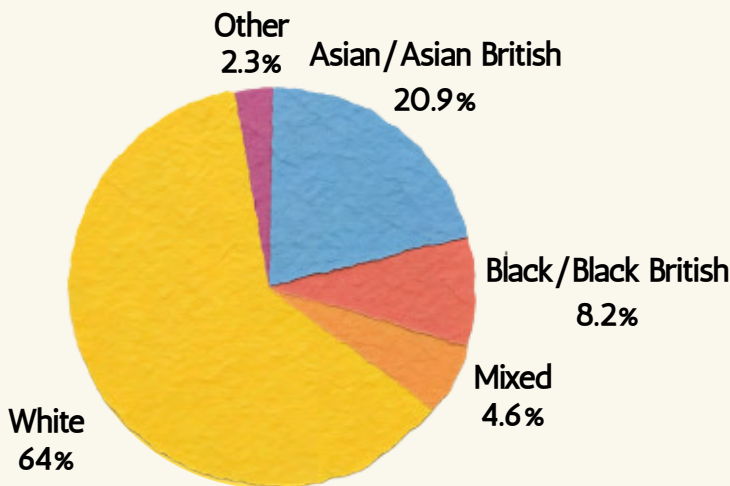
**POPULATION:  
45,416**



## RELIGION

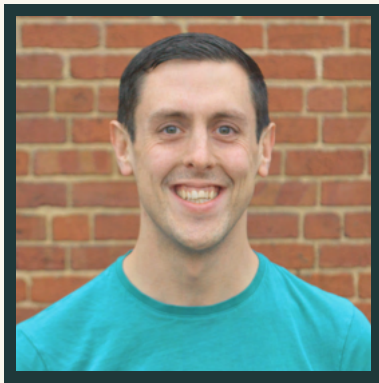


## ETHNICITY



# WHO'S WHO

## TRUSTEES



Dave Shaw

WORSHIP DIRECTOR,  
TOP CHURCH

Dave joined us in 2019. He leads services and worship opportunities throughout the week, creating a beautiful space to seek the presence of God and welcome the spirit. Dave also maintains all things tech, loves a good bike ride and a quality cup of coffee!



Ben Coleman  
CHURCH WARDEN



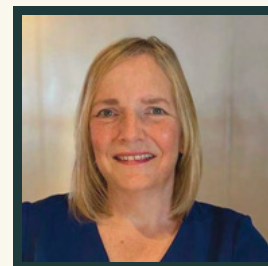
Clare Soar

YOUTH & CHILDREN'S MINISTER,  
TOP CHURCH

Clare joined us in 2019 and leads our children and youth ministry on a Sunday and in the week. She has built strong relationships with our local schools and works with other staff and clergy to develop our intergenerational ministry. Clare serves as our PSO, and enjoys rock climbing.



Stephanie Pincher



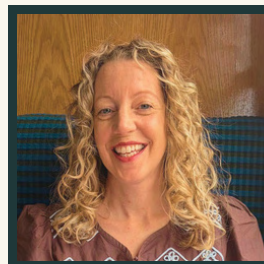
Deb Hudson



Kath Poole

COMMUNITY & HERITAGE DIRECTOR,  
TOP CHURCH

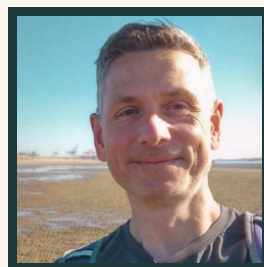
Kath joined us in 2019 working with communities and has since taken on our successful Heritage project. Kath opens our doors to the many different people of Dudley and builds relationships with local organisations. She keeps our building organised and accessible, and enjoys a night of live music.



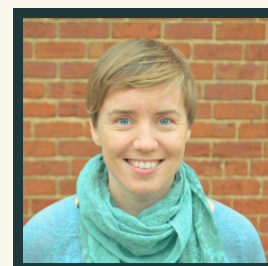
Jen Coleman



Akin Akinbobola



Carlo Di Terlizzi



Clare Soar



Andi Orgill

BUILDINGS & FINANCE MANAGER,  
TOP CHURCH

Andi worships at Top Church and joined the staff team in 2024. She manages our building and finances ensuring that Top Church remains usable and sustainable for now and for future generations. Andi has a real heart for the community and is always up for a bite at Wetherspoons.

# WHO'S WHO



Dan  
Thomas  
TEAM VICAR  
ST AUGUSTINES, ST FRANCIS

Dan joined the team in 2024 as our Team Vicar with responsibility for St Augustine's and St Francis. Dan has pastoral oversight for the congregations, plans and leads worship, and engages with the community. He works with the team rector to set vision and mission for the parishes and is always happy to join you for a coffee!



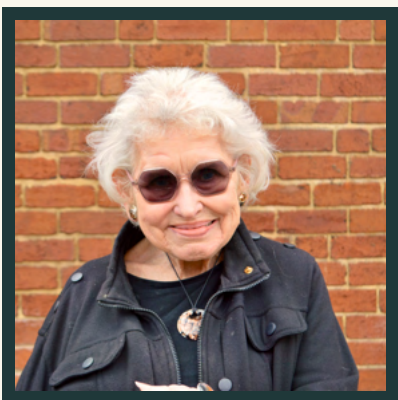
Jacqui  
Grosvenor  
CHURCH WARDEN, ST FRANCIS



Anne  
Penn  
CHURCH WARDEN, ST AUGUSTINE'S



Brian  
Wentworth  
CHURCH WARDEN, ST JOHN'S



Maggie Clift  
LLM, DUDLEY TEAM



Melissa Rose  
LLM & OFFICE MANAGER,  
DUDLEY TEAM



Sue Sharp  
ALM, DUDLEY TEAM

# Role

As Team Rector you will oversee the benefice churches in Dudley, you will provide direction and inspiration for all the team Churches but you will have a special responsibility for Top Church and the key strategic role it holds in Dudley and beyond.

## You will:

Take the lead on developing vision and mission for the benefice churches and implementing strategy to see the vision come to fruition.

Hold a special responsibility for Top Church and discerning its future direction and its resourcing role in the Dudley team and beyond

Hold the bigger visionary picture for the benefice, and work alongside the Team Vicar to enable effective mission and ministry across Dudley town.

Manage and shape the governance of the benefice, giving consideration to the different priorities and cultures of the churches. Top Church was originally set up under a BMO with a CIO and we are exploring governance options for the next phase.

Support spiritual formation at Top Church, finding relevant expressions of discipleship, prayer, participation, financial giving, compassion, and bible engagement.

Seek ways to encourage spiritual formation across the benefice churches.

In collaboration with the Team Vicar, work to build both appropriate and meaningful relationships, and encourage good pastoral practice across the benefice.

Represent the Church of England in Dudley town, lead on several civic events and hold seats on a number of boards that support development in Dudley.



Manage and work closely with the staff team to enable effective ministry at Top Church and beyond.

Ensure Sunday worship is led in a way that reflects the vision and values of Top Church.

Ensure occasional offices continue to be an important aspect of our ministry, with special concern for funeral ministry for the African Caribbean community.

Take responsibility for future building works.

Ensure all safeguarding practices and duties are carried out, and promote a healthy safeguarding culture.

# You?

A **VISIONARY** who can see beyond the present, dream for the future, and inspire the church with a compelling sense of what God is calling us to become.

A **LEADER** who brings wisdom, confidence, and humility, able to guide us with clarity, bring people along on the journey, while nurturing a culture of shared ownership.

A **STRATEGIC** thinker who can prayerfully discern direction, set priorities, and help the Dudley churches move purposefully toward their God-given potential.

An **INCLUSIVE** leader who welcomes and values people of every background, creating a community where all can belong and flourish.

A **RELATIONAL** and authentic presence who builds trust, encourages people in faith, listens deeply, and forms genuine connections across the whole church family.

An effective **COMMUNICATOR** who can convey information clearly, communicate change well, and ensure people feel informed, included, and encouraged

A **COLLABORATIVE** convenor who equips, disciples, nurtures, and develops others, enabling gifts to grow and shared ministry to thrive.

A **DYNAMIC PREACHER** and engaging teacher who communicates God's word with clarity, depth, and inspiration.

A **WORSHIP LEADER** who helps create inviting, Spirit-led spaces where the whole church can encounter God together.

A pastor with a deep **MISSIONAL HEART** who loves people and is especially attentive to those on the margins of our community.

# WE BELIEVE Home

IS REALLY IMPORTANT

**St James Vicarage** has been home to several vicars throughout the years; from those with young families to empty nesters. It offers a place of privacy and calm. set apart from the hustle and bustle of the town, which you may find important as central Dudley can be a challenging place to live.

The Rectory provides generous and modern living accommodation, including (on the ground floor) two large reception rooms, a stylish kitchen, a large home office, shower room, garage and utility room (and upstairs) four bedrooms, bathroom, separate toilet, airing cupboard and loft storage.

It is within walking distance of all four churches, (though two are a little further out of town).

## **The local and surrounding area:**

Dudley has several local attractions within walking distance, with landmarks such as Dudley Castle, the Black Country Living Museum, and Dudley Zoo. These are popular paid-for attractions, ideal for young families. Dudley also offers pockets of surprising natural beauty and SSSI. The Wren's Nest is an 8 minute walk away from the vicarage, with fossils and a good view of the town. A short drive in the car and woven through the urban landscape are; Saltwells Nature Reserve and Bumble Hole, as well as canals and green spaces, such as Sheepwash Nature Reserve and Baggeridge Country Park. There are several local primary and senior schools in walking distance from the Rectory as well as an outstanding sixth form college.

Dudley is well-connected to Birmingham via train and bus. A new tram line, nearing completion, will link the town directly to Birmingham via Wednesbury, and in the other direction to Merry Hill shopping centre. Birmingham itself is a young, vibrant and growing city, offering a rich mix of arts, music, theatre, and culture.

For those with a car and who enjoy the outdoors, the surrounding area opens quickly onto countryside. The Shropshire Hills and Staffordshire countryside are within easy reach, along with historic towns such as Bridgnorth and Ironbridge. Other attractions include The Severn Valley Railway, Clent Hills, and various National Trust properties such as Dudmaston Hall and Wightwick Manor.

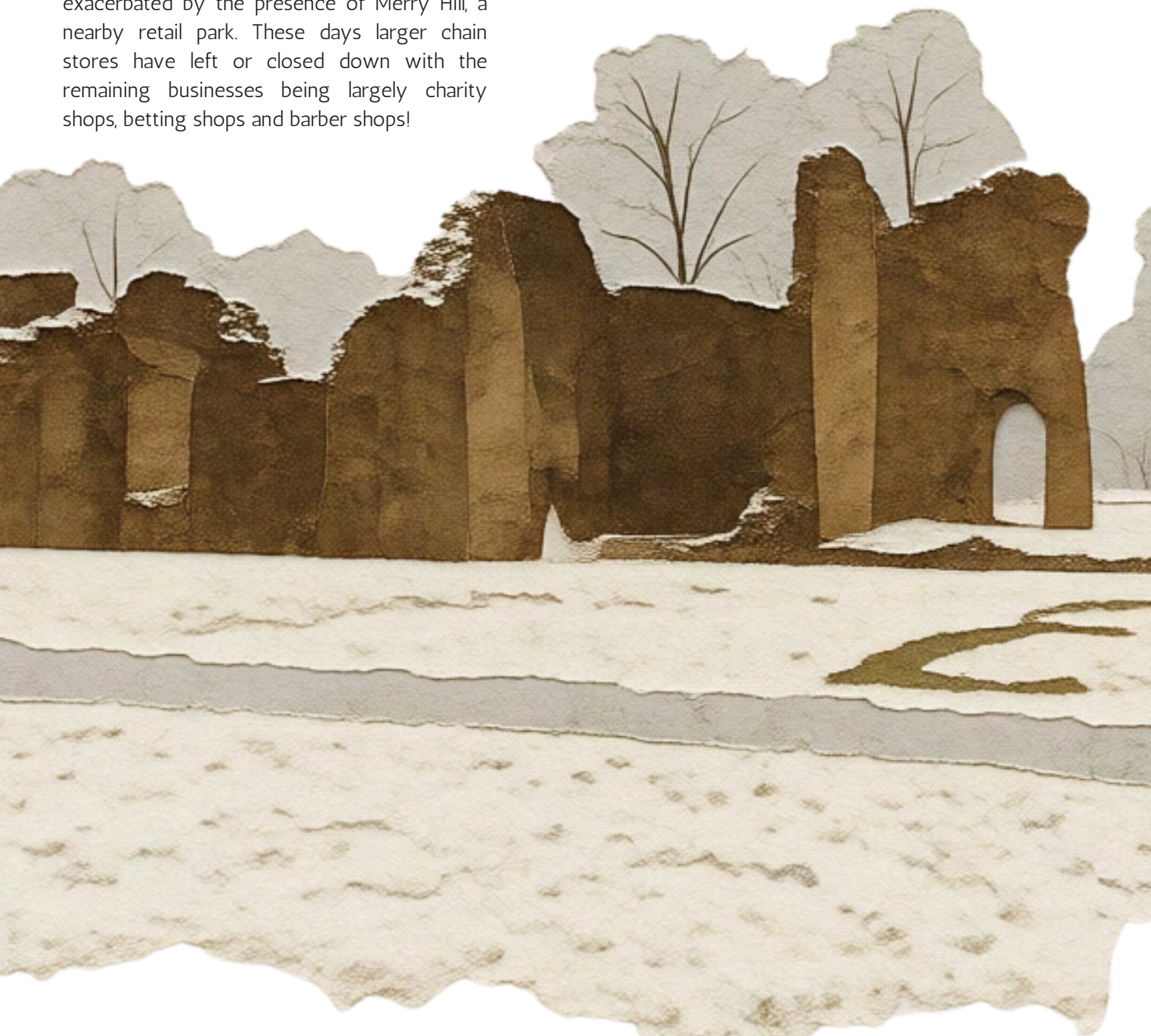
**We believe home is important and will do all we can to ensure you feel settled and safe with boundaries respected.**



# About Dudley

Dudley town has a rich heritage as a significant and historic town. It developed in the medieval period with the building of Dudley Castle, its priory and churches. Dudley High St today links two of Dudley's most notable landmarks, Dudley Castle and Top Church. Once a bustling and prosperous town, its economy has been in decline since the 80's with the closure of some larger industrial steel works, resulting in a vast number of job losses and redundancies. This decline has been further exacerbated by the presence of Merry Hill, a nearby retail park. These days larger chain stores have left or closed down with the remaining businesses being largely charity shops, betting shops and barber shops!

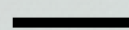
Despite these challenges, Dudley Town still has a strong sense of community and is a place where many families have lived here for generations. This can cause newcomers to the town to feel like outsiders, but there is also a lot to be said for this pride in place, great examples are the Black Country Museum, which tells the story of the area's history, and the famous Dudley Zoo. Efforts to improve the town have included the development of the soon to be completed tram line linking Dudley to Birmingham. The Windrush generation played a vital part in Dudley. You might be interested to watch the recent TV drama "Three Little Birds" by Lenny Henry.





THE GREATER

# DUDLEY DEANERY



The Greater Dudley Deanery (GDD) was formed during a diocesan reorganisation in 2021. The Deanery covers the whole of the Metropolitan Borough of Dudley along with a handful of parishes in Sandwell, Wolverhampton and Worcestershire. This makes the deanery relatively large nationally, and the largest by population in the diocese. The benefit of a larger deanery is the greater opportunity for team working between clergy and churches, and for drawing suitably significant groups together for training.

The Deanery is led by a Deanery Leadership Team (DLT) which includes an Area Dean, two Sub-Deans, and up to five lay members. The DLT guides the agenda for the Deanery Synod, and represents the deanery at certain diocesan meetings.

The expectation is that Deanery Synod acts as a focus and stimulus for parishes to deliver the mission priorities of the diocese. Deanery Synod meetings serve as a place of mutual support, encouragement and challenge to lift individual churches beyond the parochial and broaden understandings of mission. Increasingly churches work together, sharing resources and opening up new opportunities for mission.

The Deanery Chapter, of over 30 licensed ministers, is primarily a place of mutual support and encouragement, as well as a place to discuss matters of business. The Chapter meets every 4/5 weeks over lunch, and meetings are well attended.

The DLT works closely with the Diocesan training department to provide training for clergy and laity at all levels of ministry.

The task of growing healthy and sustainable churches in the Greater Dudley Deanery is challenging. Through good, collaborative working within and between parishes, between clergy and laity, and between Deanery and Diocese, along with a great deal of prayer, we face the challenge and celebrate together as God's Kingdom grows.



*Andrew Gillis*  
AREA DEAN

# Diocese of Worcester

The Diocese of Worcester covers an area of 671 square miles and includes parishes in Worcestershire, the Metropolitan Borough of Dudley, and a few parishes in northern Gloucestershire, south-east Wolverhampton and Sandwell. It has around 170 parishes and 280 church buildings, together with 100 church schools. The diocese is divided into two archdeaconries, with six deaneries.

Our diocesan vision is to grow as kingdom people, sharing the good news of Jesus' love in Worcestershire and Dudley. As the body of Christ, we join together to worship God creatively, make disciples, share hope, and transform communities as we live out values of love, compassion, justice and freedom to bring about the kingdom of God on earth.

## Priorities 2023-2030

Over the next few years, we aim to:

**Double** the number of children and young people worshipping in our churches.

**Create 100 new worshipping communities** offering a range of ways for people to come to faith and worship God. (eg Forest Church / Café Church / Walking Church).

**Invest in the renewal** of around a dozen churches to ensure that each major area of population has at least one church with 150 people attending weekly, enabling them to support other local churches.

Underpin these by investing in our clergy and lay leaders, providing **training and development** opportunities to enable them to grow and feel supported and equipped for mission.

One size doesn't fit all - we want to strengthen local churches and encourage and resource them to explore what it might mean to grow in health and sustainability in their context as they worship God, make disciples, share hope, and transform communities.

We share a vision for a church which enables its people to be:

- Deeply rooted in prayer and study of the scriptures
- Renewed and transformed by regular worship
- Equipped to witness to the gospel of love, compassion, justice and freedom
- Dedicated to helping children, young people and young adults to belong and be nurtured in faith
- Devoted to growing deeply in discipleship, offering our time and talents and money to God
- Resourced and released to minister to others
- Ready to engage with and serve our community
- Committed to making our buildings fit for purpose as a spiritual and community resource.

[Download a pdf summary](#) of our priorities along with the different ways your parish can get involved.

[Download a pdf](#) of our full diocesan transformation strategy

# How to apply

Application forms and details from:

The Bishop's Office, The Old Palace,  
Deansway, Worcester WR1 2JE

Email: [bishop.worcester@cofe-worcester.org.uk](mailto:bishop.worcester@cofe-worcester.org.uk)

Closing Date:

**19<sup>th</sup> June 2026**

Interviews will be held on:

**27th July 2026**

The Diocese of Worcester is committed to increasing diversity in appointments. This post is subject to enhanced DBS.



